

Resistant, washable,  
breathable and biodegradable



Resistant, washable,  
breathable and biodegradable



Tejidos Roca SL  
Pol. Ind. San Agustín S/N, POB 37  
CP 30430 Cehegín (Murcia) SPAIN  
ventas@tejidosroca.com

T. +34 968741152  
F. +34 968742520

[tejidosroca.com](http://tejidosroca.com)

# Balmoral

biodegradable Resistant, washable,  
breathable and



# Balmoral

Canvas fabric in 100% cotton, with width 160 cm and weight 310 gsm. It is a medium grain pique, used mainly in the footwear industry, for inner lining and also for outdoor use.

It stands out for being a resistant, washable, breathable and biodegradable natural cotton fabric.

Widely used in the footwear industry, and in advertising, for making bags and labels, also used in leather goods. Colors on demand of the client subject to special conditions. Please consult.

It accepts various treatments such as resin, antibacterial, printing, foamed, bonding, etc..

Permanente stock. More than 30 colors available.



Tejido canvas 100% algodón, con 160 cm/ancho y 310 grs/m2.

Es un piqué de grano medio, usado principalmente en la industria del calzado, para forro interior y también para uso exterior.

Destaca por ser un tejido natural de algodón resistente, lavable, transpirable y biodegradable.

Muy usado en la industria del calzado, y en publicidad, para la elaboración de bolsas y etiquetas, también usado en marroquinería.

Colores a demanda del cliente sujetos a condiciones especiales. Consultar.

Admite diversos tratamientos como el resinado, antibacterias, estampación, pegado, foamizado, etc...

Stock permanente. Más de 30 colores disponibles.

Resistant, washable,  
breathable and biodegradable





The image features a vibrant green background with several overlapping circular shapes. A central circle contains a textured, wavy pattern, while the other circles are solid shades of green. The Roca logo is positioned in the bottom-left corner.

roca



# Balmoral



## Composition

100% Cotton

## Width

160 cm +/- 2

## Yarn

10x06

## Density

76x28

## Weight

310 GSM +/- 5

## Weave

Plain 1/1

## Shrinkage

+/- 10%

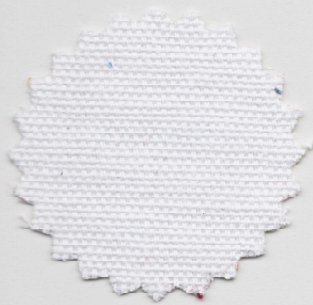
## Optional processes



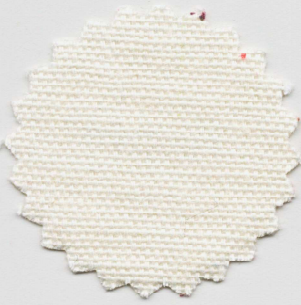




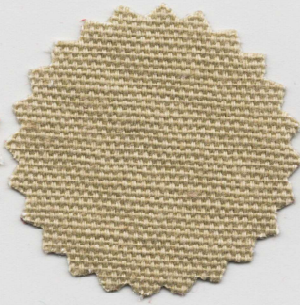
# Balmoral



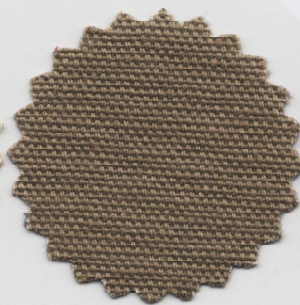
Blanco



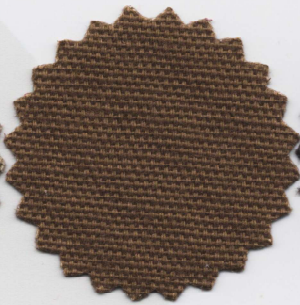
Marfil



Beige



Garbanzo



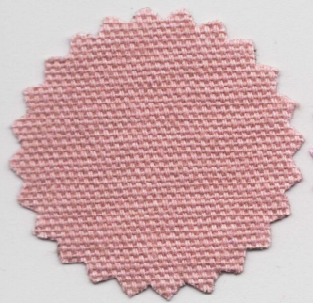
Avellana



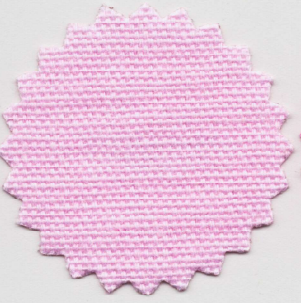
Carmelita



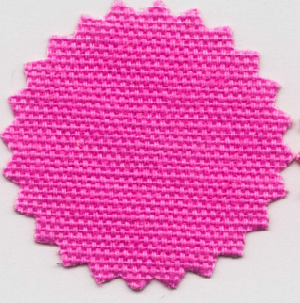
Marrón



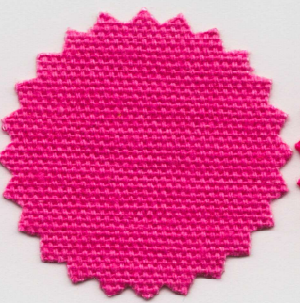
Salmón



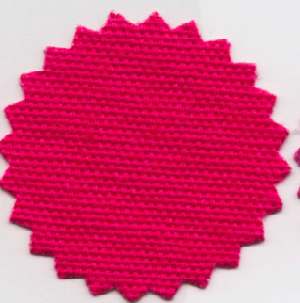
Rosa



Camelia



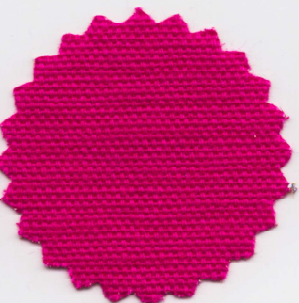
Chicle



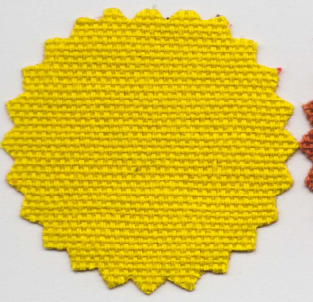
Coral



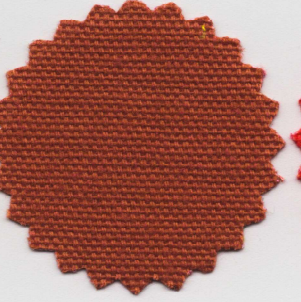
Cereza



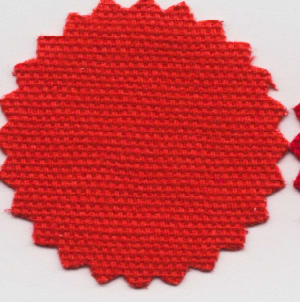
Fuxia



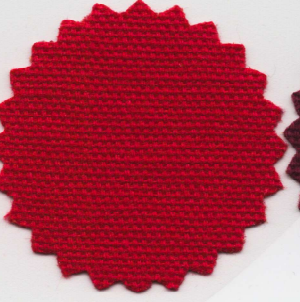
Amarillo



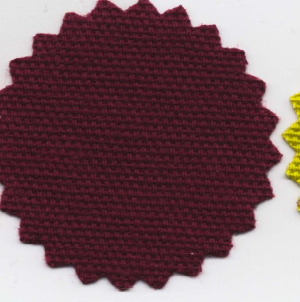
Teja



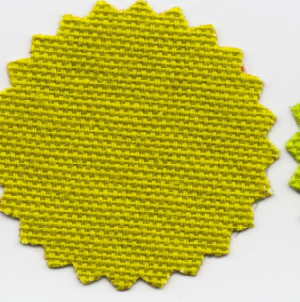
Naranja



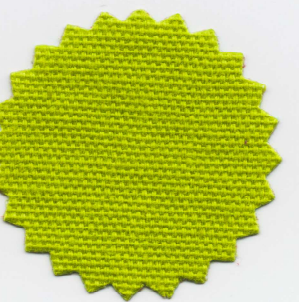
Rojo



Granate



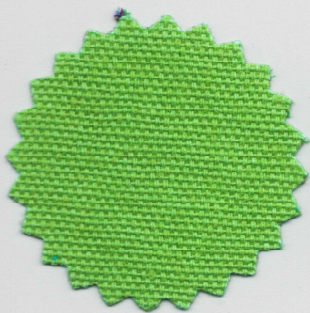
Lima



Pistacho



# Balmoral



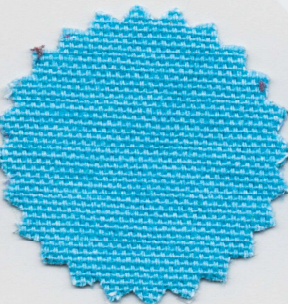
Menta



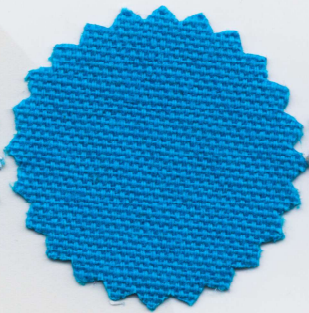
Andalucía



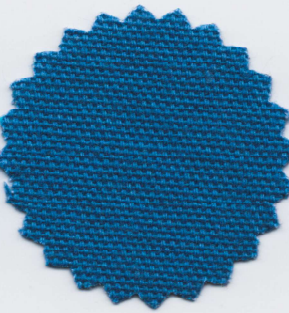
Kaki



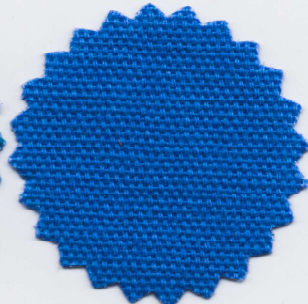
Celeste



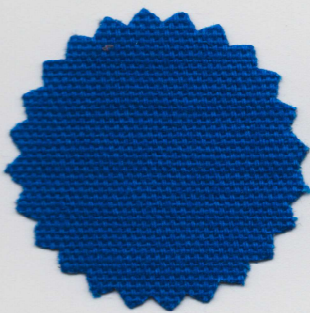
Turquesa



Azafata



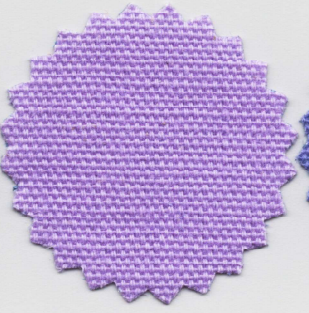
Aviación



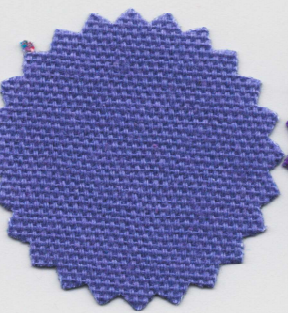
Azulón



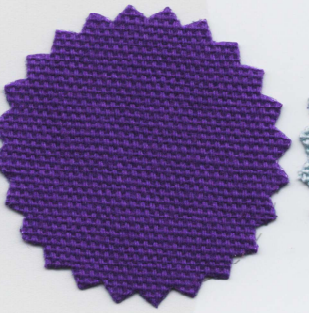
Marino



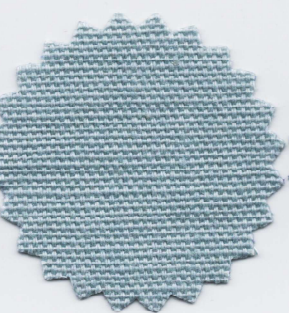
Malva



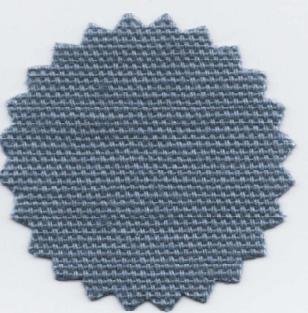
Lila



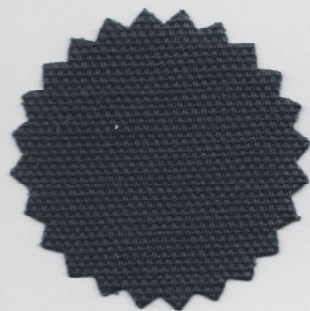
Morado



Perla



Gris



Antracita



Negro





